

# GENERATIVE AI IN THE CLASSROOM: OPPORTUNITIES, CHALLENGES, & BEST PRACTICES

## In this session we will:

- *Define key concepts & AI tools in higher ed*
- *Identify issues with Gen AI use*
- *Evaluate AI use in classroom scenarios*
- *Discuss AI syllabus policy statements*
- *Consider AI activities & assessment*
- *Provide resources for responsible AI use*

Fall Faculty Conference: September 2, 2025

Session: 12:45-1:45pm or 2:00-3:00pm

Presenters: Abby Laird (CTLD), Cheyenne Riehl (Library), Kathy Klein (CTLD)





# **WELCOME & INTRODUCTIONS**



**Abigail Laird**  
**Instructional Designer, CTLD**



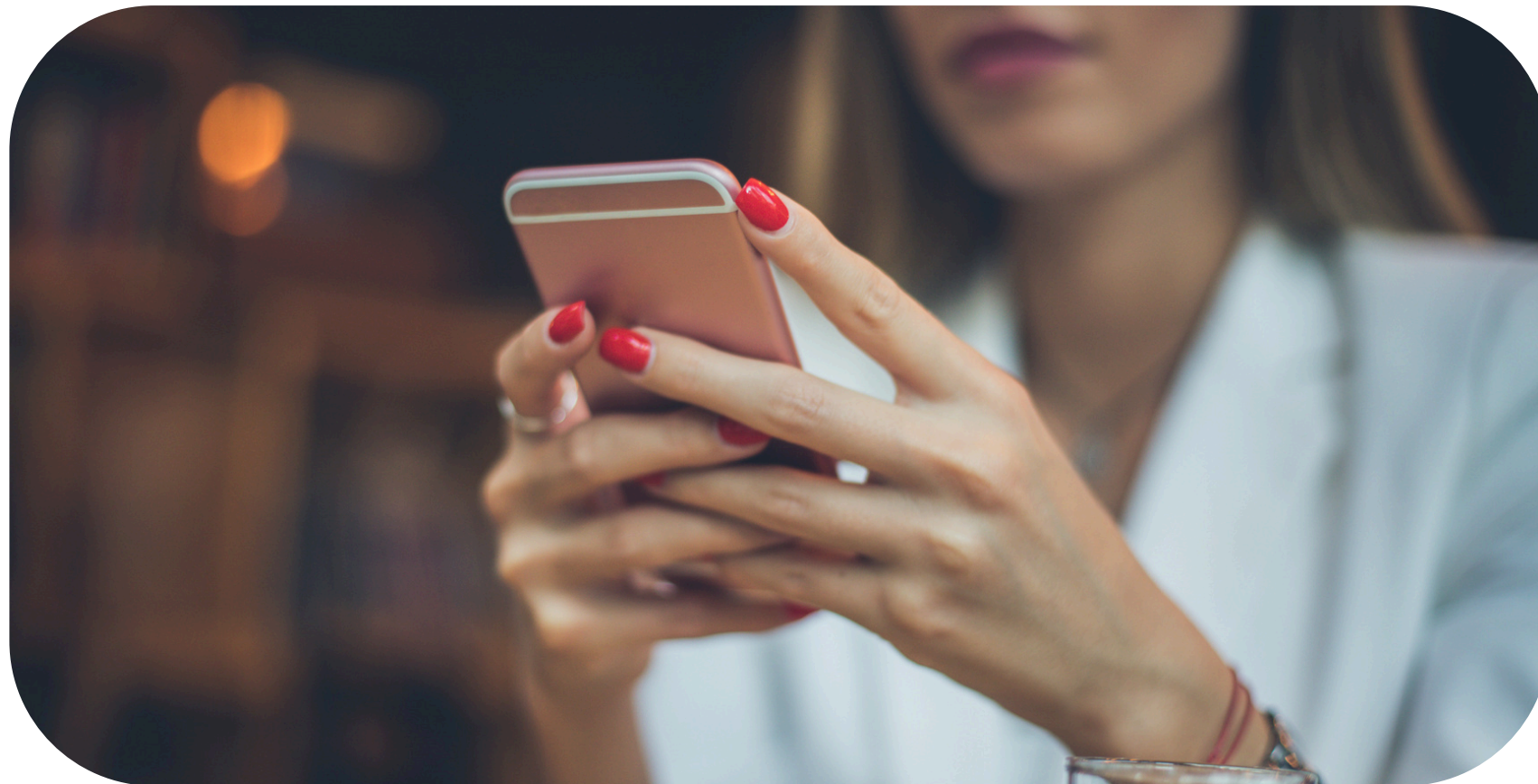
**Cheyenne Riehl**  
**Student Success Librarian**  
**Instructor in the Library**



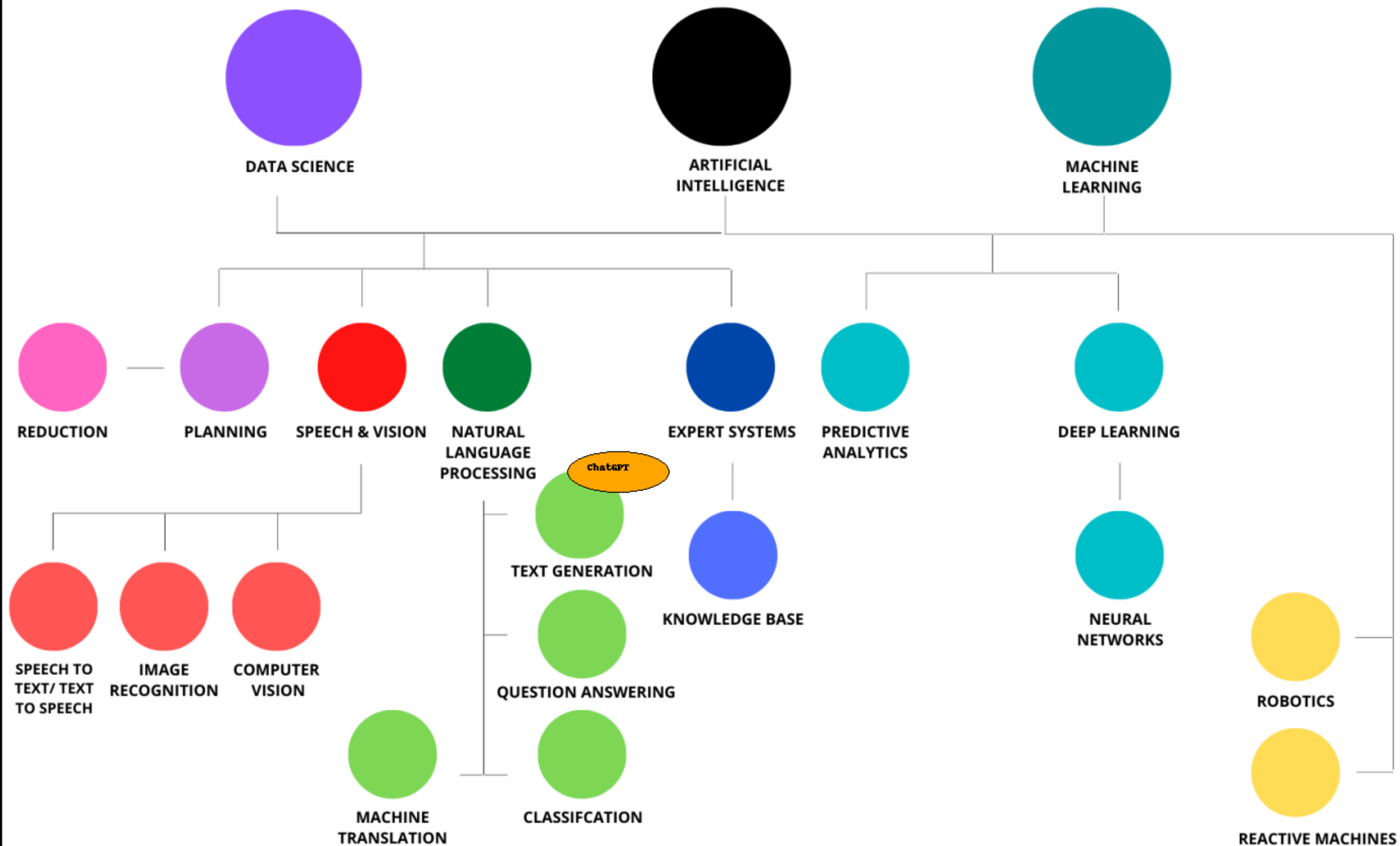
**Dr. Kathy Klein**  
**Executive Director, CTLD &**  
**Associate Professor (OT)**

# YOUR THOUGHTS

Scan the QR code to contribute to our word cloud and survey on Generative AI.



# AI FAMILY TREE





# DEFINE AI & AI TOOLS



- **Generative AI:** artificial intelligence that creates new content in response to prompts by drawing on patterns it has learned from large reference databases of examples
- **Prompt:** Text-based instruction or query

## Popular GenAI Tools in Higher Ed

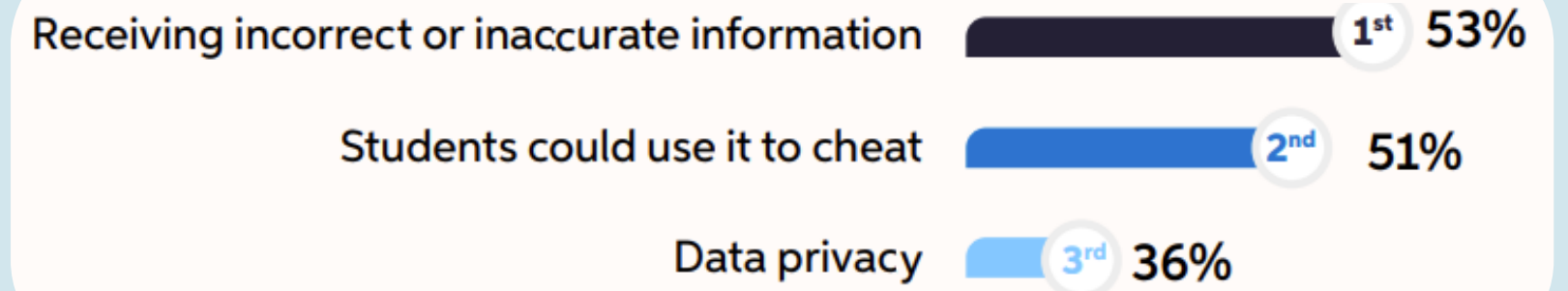
- Chatgpt
- Microsoft Copilot
- Google Gemini
- Perplexity



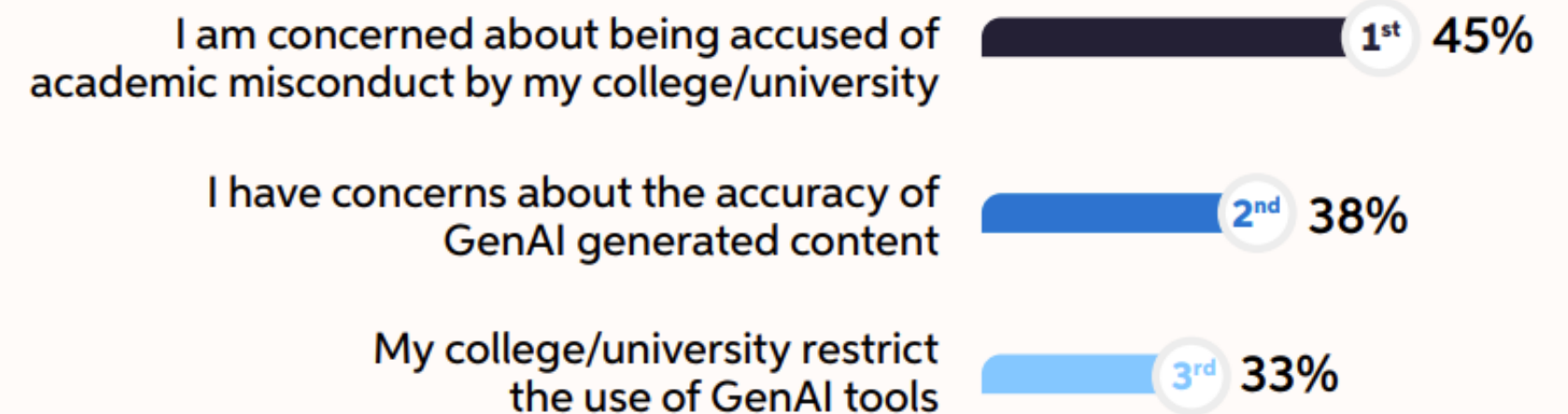


# GEN AI: CURRENT CONCERNS

- Hallucinations & Bias
- Paywalled Content
- Scope of Training Data
- Reproducibility
- Ethics & Privacy
- Legal Context



Chegg (2025). *3 main concerns students have about using GenAI Tools* [Online image]. <https://www.chegg.org/global-student-survey-2025>



Chegg (2025). *Primary reasons students don't use GenAI tools* [Online image]. <https://www.chegg.org/global-student-survey-2025>



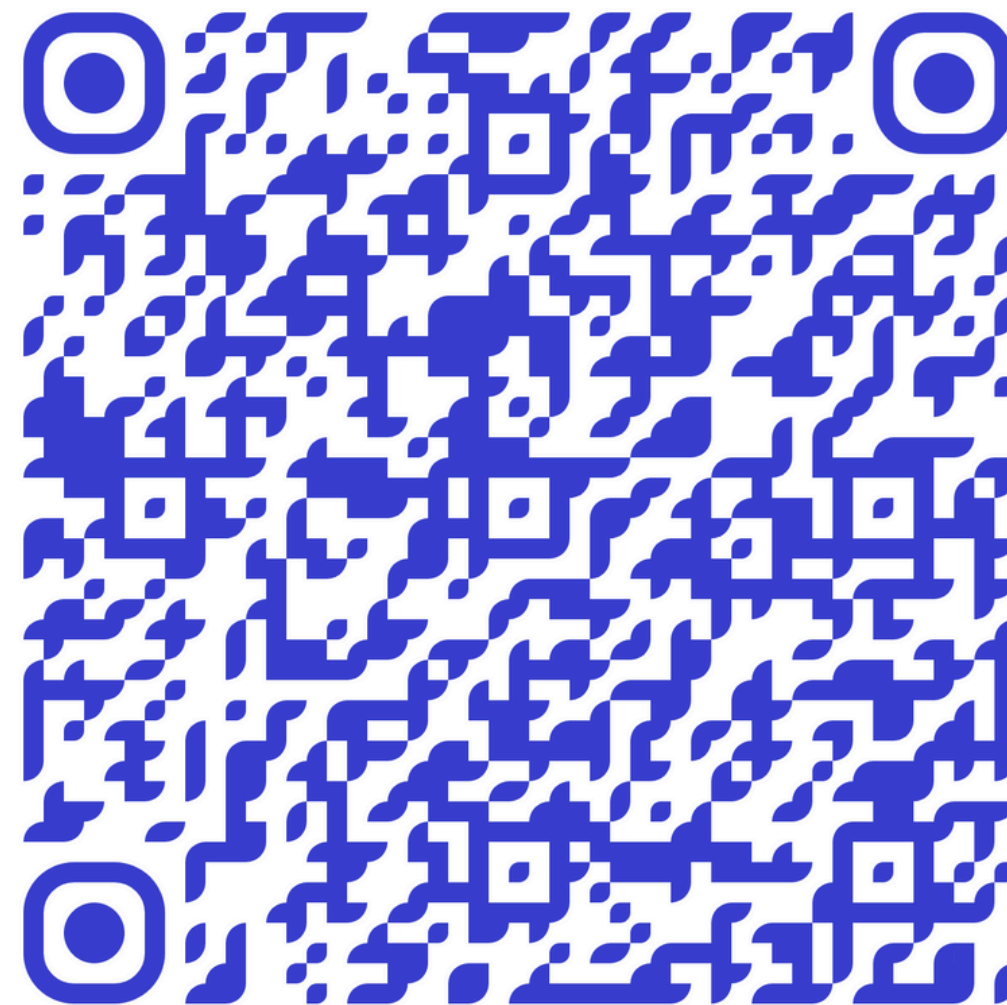


# CLASSROOM APPLICATION ACTIVITY



## DISCUSSION & GOOGLE DOC RESOURCE

SESSION 1 - 12:45PM



SESSION 2 - 2:00PM





# AI-CONSCIOUS COURSE DESIGN, SYLLABI & ASSESSMENTS



AI-Supported & AI-Resistant  
Assessment Ideas (Google Doc)



## Generative AI & Equity in the Classroom

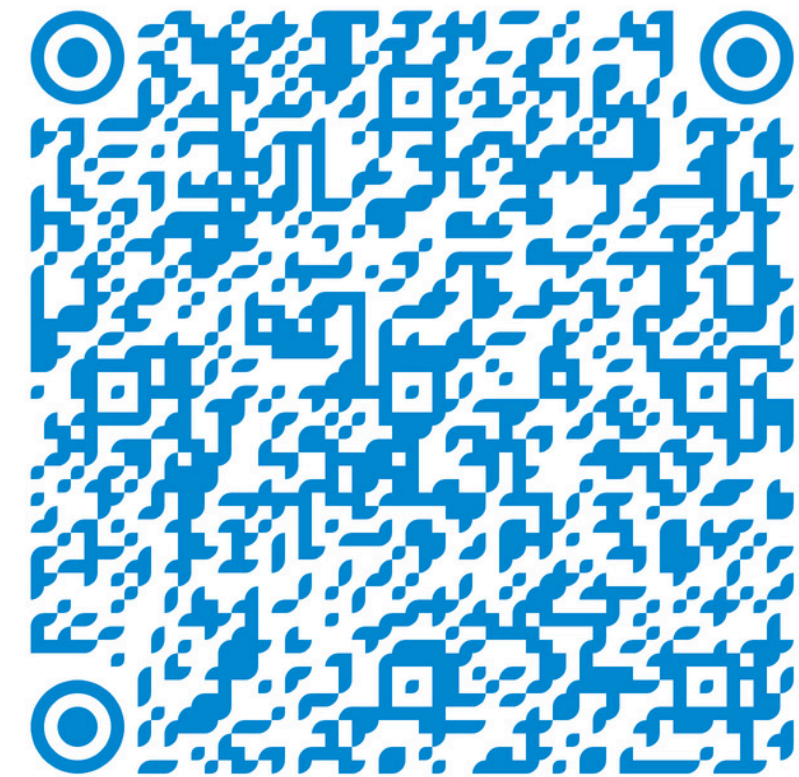
- Provides opportunity for individualized learning, virtual tutoring, and inclusive learning materials
- Affected by algorithmic biases, varying AI literacy skills, and users' access to technology





# HELPFUL RESOURCES

## COMMUNITY SUPPORT





# WRAP UP



## THANKS FOR PARTICIPATING!



[ctld@stockton.edu](mailto:ctld@stockton.edu) or [librarian@stockton.edu](mailto:librarian@stockton.edu)