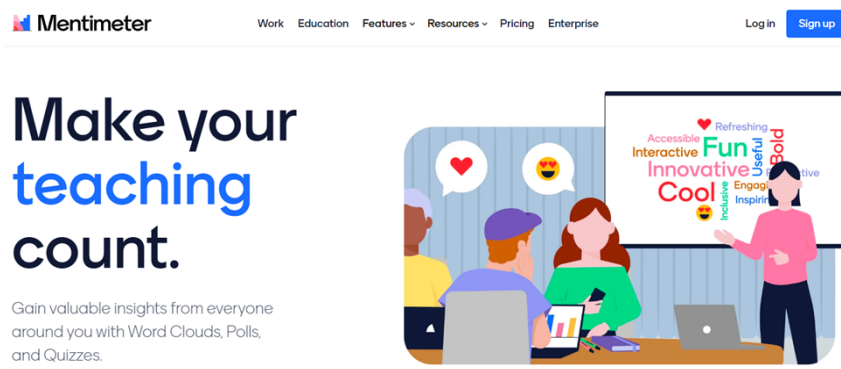


Using Mentimeter in a Classroom

OVERVIEW

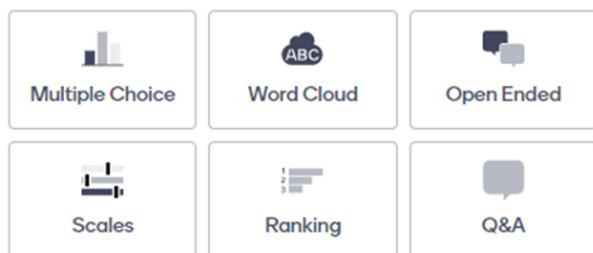
Mentimeter is an interactive presentation software that can be used to engage students, understand their learning, and boost learning outcomes in a classroom. This instructional technology is used in GNM 2224 Spreadsheet Modeling course in Fall 2022 semester.



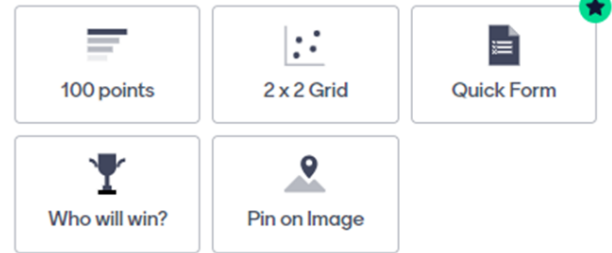
MENTIMETER FEATURES

Mentimeter includes dynamic word clouds, live & instant polling, entertaining quizzes, informative Q&As, and insightful surveys. [Reference: www.mentimeter.com/features]

Popular question types



Advanced questions



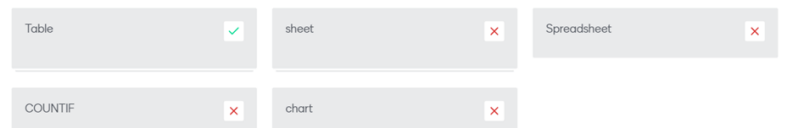
QUIZ SLIDES

In the quiz competition, an instructor can make multiple-choice questions or short answer questions.

What is the name of small square that enables you auto fill data or formula?



7. An Excel ____ is a range of cells converted in Excel used to analyze a group of related data.

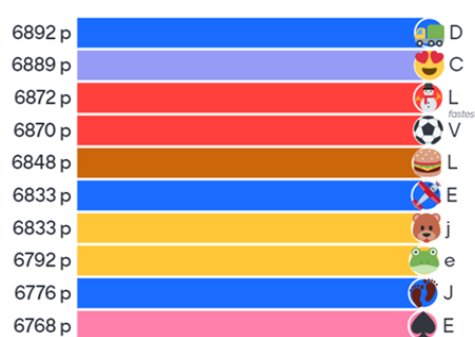


The correct answer is: table

SCORING

An instructor can add the leaderboard slide that shows the scoring. In scoring quiz questions, there are two options. First, faster answers get more points. Second, all correct answers get 1000 points. Incorrect or no answers get zero points.

Leaderboard



The above leaderboard is an example of the first scoring option. Full names of the students are hidden. Only the first letters of the students' names are visible. To promote students' participation, extra credits were given to the top 3 students.

EFFECTIVENESS

The average statistics are computed by removing the highest and lowest scores.

FINAL AVERAGE SCORE:

9.4 points

Was increased from Fall 2021 to Fall 2022

QUIZ AVERAGE SCORE:

3.5 points

Was increased from Fall 2021 to Fall 2022