

---

**The  
Richard Stockton College  
of New Jersey**

*An Environment for Excellence*

---

**Fall 1993**

---

**Enrollment**

---

**Report**

---

---

**Comparison of**

---

**Fall 1991-1992-1993**

---

**Enrollment**

---

Prepared by  
Division of Student Services  
Office of the Vice President  
September 22, 1993

---

**DIVISION OF STUDENT SERVICES**  
**Office of the Vice President**

**The Richard Stockton College of New Jersey**  
**Fall 1993 Enrollment Report**  
**Summary Statements**

- The College's enrollment management program for the Fall 1993 semester yielded the most selective admissions process in history for both freshmen and transfers.
- There are fewer new students (freshmen and transfers) enrolled this term when compared to last year - a greater proportion of the new students are freshmen.
- Academic qualifications as measured by the SAT, high school rank, academic index, and grade-point average have improved for the seventh consecutive year.
- This year's total SAT score (TSAT = 1041) represents a 16 point increase over last fall.
- For the fourth consecutive year, the College has evidenced enrollment stability with respect to the total number of students enrolled (5,782) and the FTE generated (4,706).
- There is a relatively equal distribution of freshmen, sophomores, juniors, and seniors within our matriculated student population.
- The Division of Natural Sciences and Mathematics has demonstrated steady growth in its proportional share of declared and intended majors.
- Student retention rates are better than ever and, as a result, graduation rates have reached record highs.

**THE RICHARD STOCKTON COLLEGE OF NEW JERSEY**  
**FALL 1993 ENROLLMENT REPORT**  
**Comparison of Fall 1991-1992-1993**

	Fall 1991	Fall 1992	Fall 1993
<b>ADMISSIONS SELECTIVITY</b>			
<b>Total Applicant Pool</b>	<b>5745</b>	<b>5593</b>	<b>6126</b>
Freshmen	3842	3692	4019
Transfer and Readmits	1903	1901	2107
% of Freshmen Admitted	45%	43%	39%
% of Transfer/Readmit Admitted	72%	57%	49%
<b>Total Enrolled</b>	<b>1458</b>	<b>1418</b>	<b>1396</b>
Freshmen	690	738	716
Transfer/Readmits	768	680	680
<b>FRESHMEN</b>			
<b>Total Freshmen</b>	<b>690</b>	<b>738</b>	<b>716</b>
Ratio FT	689 (100%)	721 (98%)	710 (99%)
Ratio PT	1 (0%)	17 (2%)	6 (1%)
<b>Average Total SAT</b>	1018 TSAT	1025 TSAT	1041 TSAT
Average Verbal SAT	480 VSAT	486 VSAT	489 VSAT
Average Math SAT	538 MSAT	539 MSAT	552 MSAT
<b>High School Rank</b>	75 %ile	75 %ile	78 %ile
<b>Academic Index</b>	213.8 AI	214.5 AI	218.1 AI
<b>Characteristics</b>			
Male	323 (47%)	324 (44%)	341 (48%)
Female	366 (53%)	414 (56%)	375 (52%)
Minority (B/H)	126 (18%)	100 (14%)	101 (14%)
Other Minority (A/AI)	32 (5%)	23 (3%)	31 (4%)
Non-Minority	531 (77%)	615 (83%)	584 (82%)
<b>TRANSFERS AND READMITS</b>			
<b>Total Transfers</b>	<b>687</b>	<b>605</b>	<b>631</b>
Ratio FT	564 (82%)	510 (84%)	522 (83%)
Ratio PT	123 (18%)	95 (16%)	109 (17%)
<b>Total Readmits</b>	<b>81</b>	<b>75</b>	<b>49</b>
Ratio FT	37 (46%)	35 (47%)	31 (63%)
Ratio PT	44 (54%)	40 (53%)	18 (37%)

**THE RICHARD STOCKTON COLLEGE OF NEW JERSEY**  
**FALL 1993 ENROLLMENT REPORT**  
**Comparison of Fall 1991-1992-1993**

	Fall 1991	Fall 1992	Fall 1993
<b>ENROLLMENT DATA</b>			
Headcount	5650	5683	<b>5782</b>
FTE	4629	4675	<b>4706</b>
Ratio FT	4384 (78%)	4400 (77%)	4435 (77%)
Ratio PT	1266 (22%)	1283 (23%)	1347 (23%)
<b>Characteristics</b>			
Male	2753 (49%)	2700 (48%)	2733 (47%)
Female	2897 (51%)	2983 (52%)	3049 (53%)
Minority (B/H)	671 (12%)	680 (12%)	684 (12%)
Other Minority (A/AI)	171 ( 3%)	174 ( 3%)	192 ( 3%)
Non-Minority	4808 (85%)	4829 (85%)	4906 (85%)
<b>Admission Status</b>			
Matriculated	4965 (88%)	5054 (89%)	5130 (89%)
Non-Matriculated	685 (12%)	629 (11%)	652 (11%)
<b>Class Level (matriculated only)</b>			
Freshman	1274 (26%)	1291 (25%)	1307 (25%)
Sophomore	1227 (25%)	1161 (23%)	1122 (22%)
Junior	1323 (27%)	1354 (27%)	1435 (28%)
Senior	1141 (23%)	1248 (25%)	1266 (25%)
<b>INSTITUTIONAL RETENTION</b>			
Fall-to-Spring Retention	93%	95%	<b>95%</b>
Spring-to-Fall Retention	91%	90%	<b>92%</b>
<b>FRESHMAN RETENTION</b>			
Freshman-to-Sophomore 3rd Semester Retention	79%	77%	<b>83%</b>
<b>GRADUATES*</b>			
	930	1030	<b>1089</b>

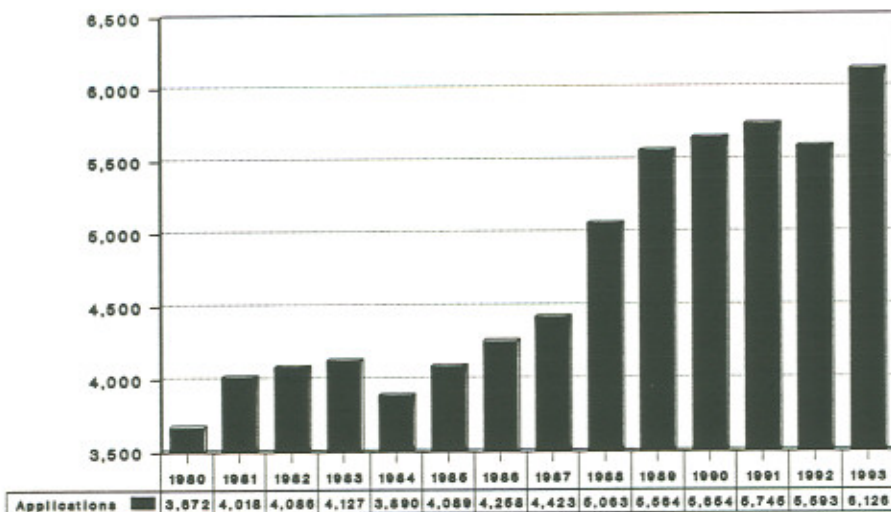
\* Fall 1991 = FY 1991; Fall 1992 = FY 1992; Fall 1993 = FY 1993

**THE RICHARD STOCKTON COLLEGE OF NEW JERSEY**  
**Comparison of Fall 1991-1992-1993 Enrollment**  
**By Declared and Intended Major**

	Fall 1991	Fall 1992	Fall 1993
<b># MATRIC STUDENTS</b>	<b>4965</b>	<b>5054</b>	<b>5130</b>
<b>ARHU</b>	<b>481 (10%)</b>	<b>524 (10%)</b>	<b>571 (11%)</b>
ARTS	183 ( 4%)	177 ( 4%)	176 ( 3%)
HIST	115 ( 2%)	108 ( 2%)	121 ( 2%)
LITT/LANG	169 ( 3%)	224 ( 4%)	253 ( 5%)
PHIL	14 ( 0%)	15 ( 0%)	21 ( 0%)
<b>NAMS</b>	<b>803 (16%)</b>	<b>996 (20%)</b>	<b>1093 (21%)</b>
BIOL	192 ( 4%)	252 ( 5%)	305 ( 6%)
CHEM	48 ( 1%)	42 ( 1%)	49 ( 1%)
ENVL	232 ( 5%)	284 ( 6%)	285 ( 6%)
GEOL	25 ( 1%)	29 ( 1%)	35 ( 1%)
MARS	178 ( 4%)	232 ( 5%)	231 ( 5%)
MATH	78 ( 2%)	98 ( 2%)	132 ( 3%)
PHYS	50 ( 1%)	59 ( 1%)	56 ( 1%)
<b>PROS</b>	<b>2038 (41%)</b>	<b>2010 (40%)</b>	<b>1897 (37%)</b>
BSNS	1339 (27%)	1204 (24%)	1032 (20%)
INFO	223 ( 4%)	213 ( 4%)	210 ( 4%)
NURS	98 ( 2%)	102 ( 2%)	102 ( 2%)
PHTH	238 ( 5%)	303 ( 6%)	347 ( 7%)
PUBH	77 ( 2%)	108 ( 2%)	114 ( 2%)
SPAD	63 ( 1%)	80 ( 2%)	92 ( 2%)
<b>SOBL</b>	<b>962 (19%)</b>	<b>939 (19%)</b>	<b>980 (19%)</b>
CRIM	281 ( 6%)	293 ( 6%)	317 ( 6%)
ECON	45 ( 1%)	40 ( 1%)	29 ( 1%)
POLS	205 ( 4%)	161 ( 3%)	152 ( 3%)
PSYC	260 ( 5%)	271 ( 5%)	264 ( 5%)
SOCY/ANTH	56 ( 1%)	53 ( 1%)	73 ( 1%)
SOWK	115 ( 2%)	121 ( 2%)	145 ( 3%)
<b>GENS</b>	<b>75 ( 2%)</b>	<b>55 ( 1%)</b>	<b>50 ( 1%)</b>
LIBA	75 ( 2%)	55 ( 1%)	50 ( 1%)
<b>UNDC</b>	<b>606 (12%)</b>	<b>530 (10%)</b>	<b>539 (11%)</b>

Please note percentages have been rounded.

### Stockton College of New Jersey Fall 1980 - Fall 1993 Total Applicants

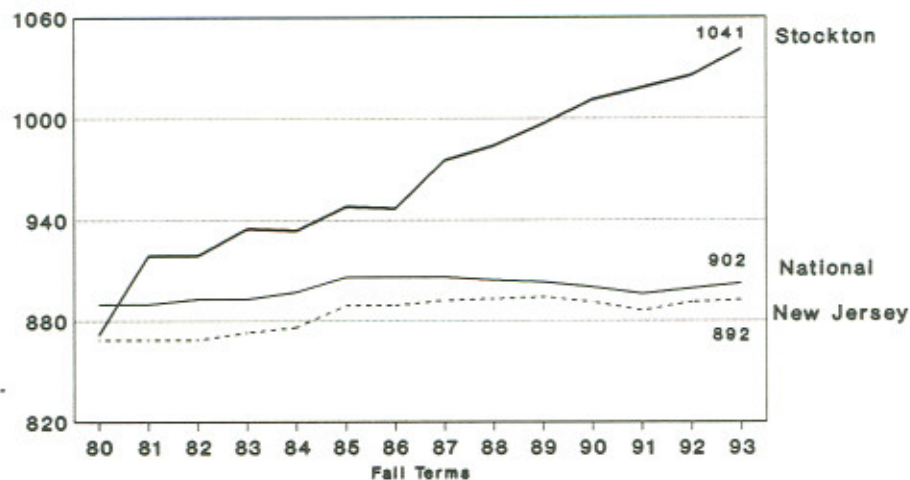


#### Fall Terms

Stockton received 6,126 applications for admission in Fall 1993. This represents an increase of 67% over the Fall 1980 applicant pool of 3,672.

9/20/93

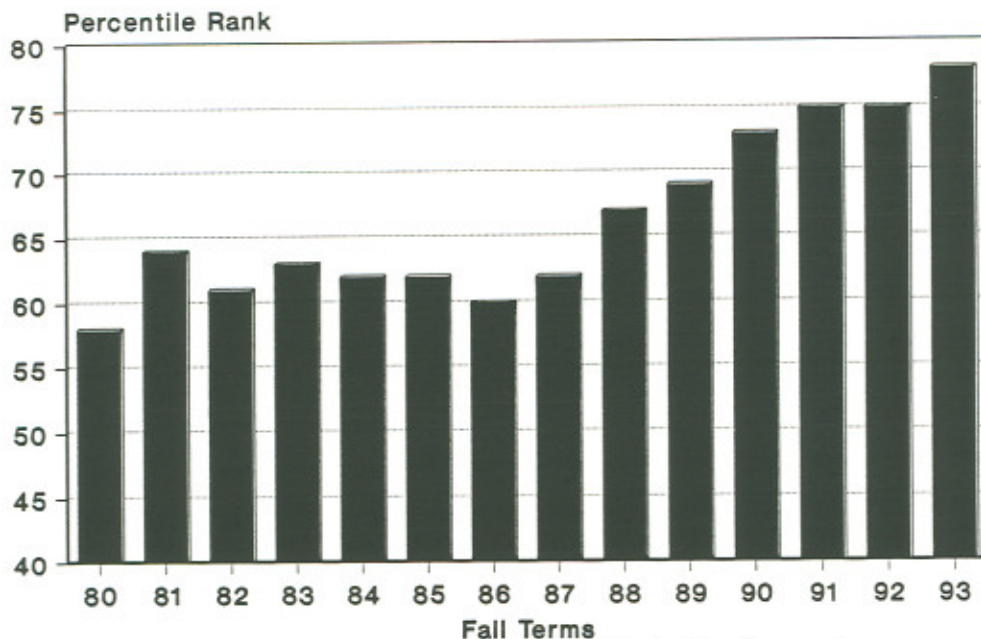
### Average Total SAT Scores 1980 - 1993 Stockton Regular Admission versus National and New Jersey College-Bound



Stockton College reports a 1041 average total SAT score for its regularly admitted freshmen for the Fall 1993 semester. This figure represents a 169 point increase when compared to the Fall 1980 SAT score of 872. As a frame of reference, Stockton's improved SAT profile is significant when compared to the trends that have occurred for college-bound seniors both nationally and statewide.

9/20/93

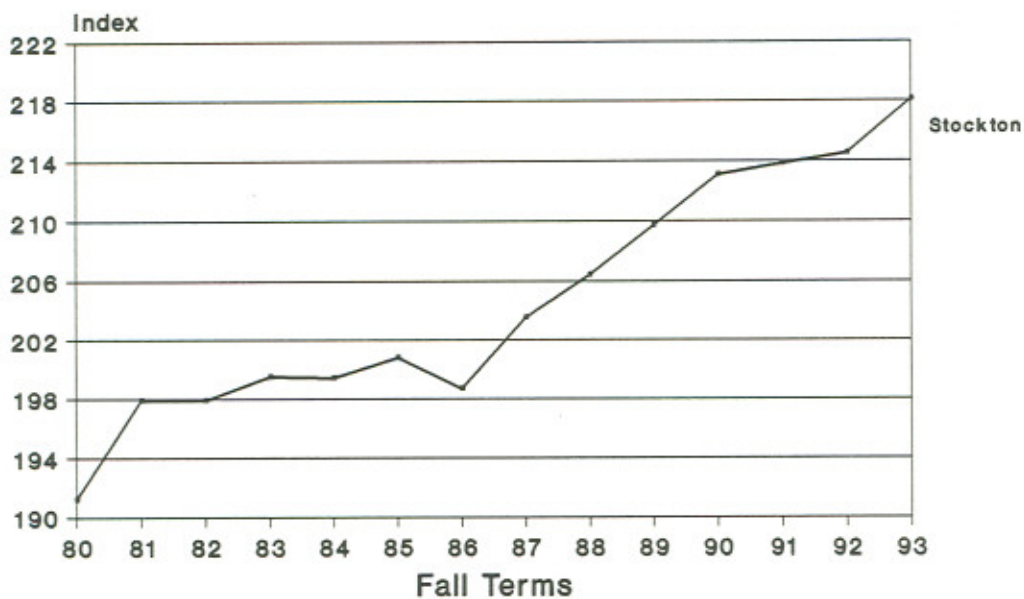
### Stockton College of New Jersey Average High School Rank 1980-1993



The average high school rank of entering freshmen increased from the 58th percentile in Fall 1980 to 78th in Fall 1993.

9/20/93

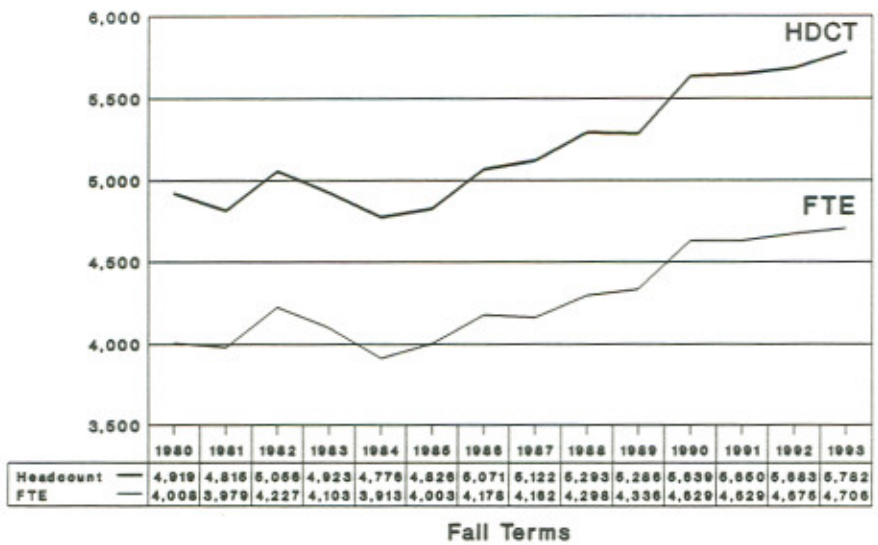
### Stockton College of New Jersey Academic Index 1980 - 1993



The Academic Index at Stockton has increased from 191.2 in Fall 1980 to 218.1 in Fall 1993.

9/20/93

### Stockton College of New Jersey Total Undergraduate Population (HDCT) and Full-Time Equivalents (FTE) 1980-93

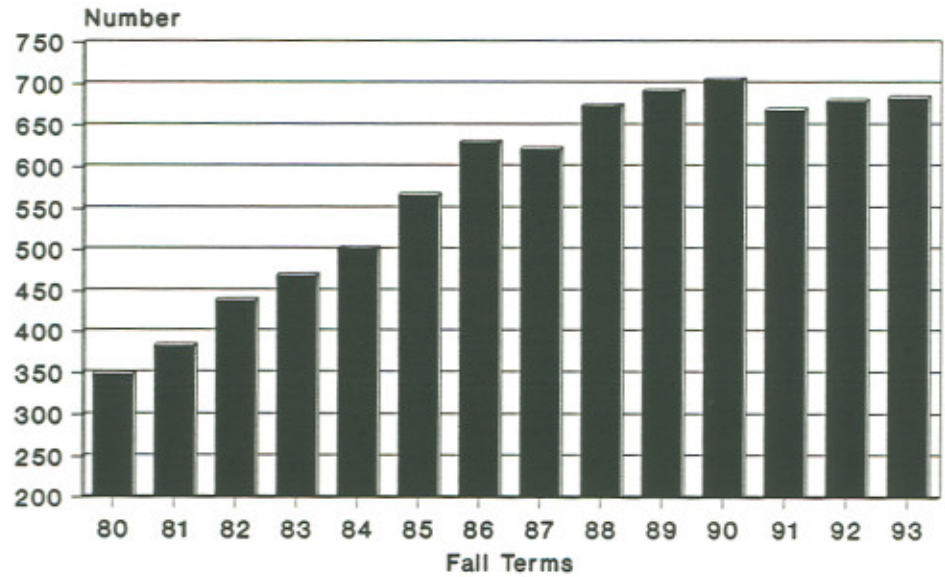


Fall Terms

Stockton reports a headcount of 5,782 for Fall 1993, which represents an 18% increase over Fall 1980. The Fall 1993 FTE is 4,706 which is 17% above the Fall 1980 FTE.

9/20/93

### Stockton College of New Jersey Black and Hispanic Student Undergraduate Population 1980-1993



The number of Black and Hispanic students at Stockton has increased 96% from 349 in Fall 1980 to 684 in Fall 1993.

9/20/93