
**The
Richard Stockton College
of New Jersey**

An Environment for Excellence

Fall 1994

Enrollment

Report

Comparison of

Fall 1992-1993-1994

Enrollment

Prepared by
Division of Student Services
Office of the Vice President

Presented to
The
Richard Stockton College
of New Jersey
Board of Trustees
September 21, 1994

DIVISION OF STUDENT SERVICES
Office of the Vice President

The Richard Stockton College of New Jersey
Fall 1994 Enrollment Report

SUMMARY STATEMENTS

- The College's enrollment management program for the Fall 1994 semester has yielded the most academically qualified freshman and transfer class in its history.
- Academic qualifications as measured by the SAT, high school rank, academic index, and grade-point average have improved for the eighth consecutive year.
- This year's Total SAT score of **1054** represents a 13 point increase when compared to last year. The high school rank has reached the **80th** percentile, and the academic index is at an impressive **221.4**.
- For the fifth consecutive year, the College has evidenced enrollment stability with respect to the total number of students enrolled (5,703) and the FTE generated (4,672).
- Ninety percent (90%) of our undergraduate population is matriculated, and there exists a relatively equal distribution of freshmen, sophomores, juniors, and seniors.
- The Division of Natural Sciences and Mathematics has demonstrated steady growth in its proportional share of declared and intended majors.
- Student retention rates are better than ever with 85% of last year's freshmen currently enrolled in their sophomore year.

**THE RICHARD STOCKTON COLLEGE OF NEW JERSEY
FALL 1994 ENROLLMENT REPORT**

Comparison of Fall 1992-1993-1994

	Fall 1992	Fall 1993	Fall 1994
ADMISSIONS SELECTIVITY			
Total Applicant Pool	5593	6126	5682
Freshmen	3692	4019	3686
Transfer and Readmits	1901	2107	1996
% of Freshmen Admitted	43%	39%	43%
% of Transfer/Readmit Admitted	57%	49%	52%
Total New Students	1418	1396	1482
Freshmen	738	716	780
Transfer/Readmits	680	680	702
FRESHMEN			
Total Freshmen	738	716	780
Ratio FT	721 (98%)	710 (99%)	752 (96%)
Ratio PT	17 (2%)	6 (1%)	28 (4%)
Average Total SAT	1025 TSAT	1041 TSAT	1054 TSAT
Average Verbal SAT	486 VSAT	489 VSAT	491 VSAT
Average Math SAT	539 MSAT	552 MSAT	563 MSAT
High School Rank	75 %ile	78 %ile	80 %ile
Academic Index	214.5 AI	218.1 AI	221.4 AI
Characteristics			
Male	324 (44%)	341 (48%)	353 (45%)
Female	414 (56%)	375 (52%)	427 (55%)
Minority (B/H)	100 (14%)	101 (14%)	101 (13%)
Other Minority (A/AI)	23 (3%)	31 (4%)	28 (4%)
Non-Minority	615 (83%)	584 (82%)	651 (83%)
TRANSFERS AND READMITS			
Total Transfers	605	631	625
Ratio FT	510 (84%)	522 (83%)	515 (82%)
Ratio PT	95 (16%)	109 (17%)	110 (18%)
Total Readmits	75	49	77
Ratio FT	35 (47%)	31 (63%)	40 (52%)
Ratio PT	40 (53%)	18 (37%)	37 (48%)

THE RICHARD STOCKTON COLLEGE OF NEW JERSEY
FALL 1994 ENROLLMENT REPORT
Comparison of Fall 1992-1993-1994

	Fall 1992	Fall 1993	Fall 1994
ENROLLMENT DATA			
Headcount	5683	5782	5703
FTE	4675	4706	4672
Ratio FT	4400 (77%)	4435 (77%)	4412 (77%)
Ratio PT	1283 (23%)	1347 (23%)	1291 (23%)
Characteristics			
Male	2700 (48%)	2733 (47%)	2679 (47%)
Female	2983 (52%)	3049 (53%)	3024 (53%)
Minority (B/H)	680 (12%)	684 (12%)	692 (12%)
Other Minority (A/AI)	174 (3%)	192 (3%)	181 (3%)
Non-Minority	4829 (85%)	4906 (85%)	4830 (85%)
Admission Status			
Matriculated	5054 (89%)	5130 (89%)	5147 (90%)
Non-Matriculated	629 (11%)	652 (11%)	556 (10%)
Class Level (matriculated only)			
Freshman	1291 (25%)	1307 (25%)	1330 (26%)
Sophomore	1161 (23%)	1122 (22%)	1160 (23%)
Junior	1354 (27%)	1435 (28%)	1326 (26%)
Senior	1248 (25%)	1266 (25%)	1331 (26%)

**FRESHMAN-TO-SOPHOMORE
STUDENT RETENTION RATES**

Entire Freshman Class	77%	83%	85%
Minority (B/H) Students	77%	86%	87%

GRADUATES*

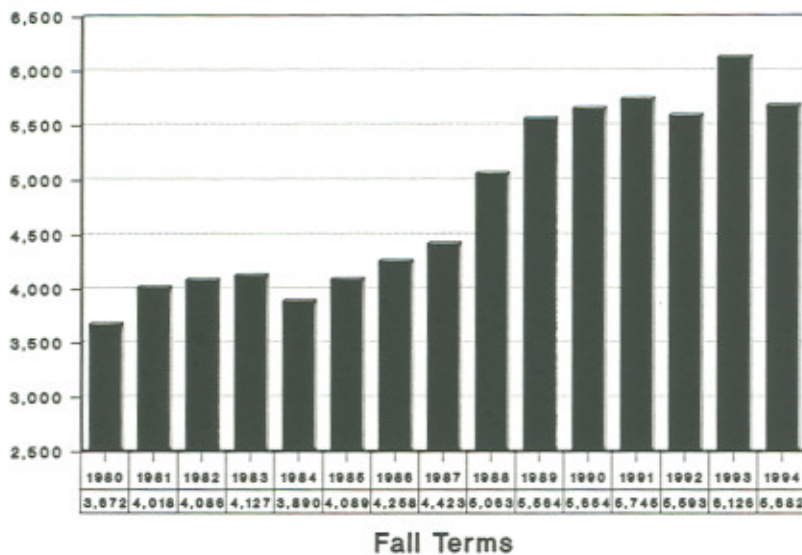
	1030	1089	1062
--	------	------	------

* Fall 1992 = FY 1992; Fall 1993 = FY 1993; Fall 1994 = FY 1994
 Degrees Conferred

THE RICHARD STOCKTON COLLEGE OF NEW JERSEY
Comparison of Fall 1992-1993-1994 Enrollment
By Declared and Intended Major

	Fall 1992	Fall 1993	Fall 1994
# MATRIC STUDENTS	5054	5130	5147
ARHU	524 (10%)	571 (11%)	550 (11%)
ARTS	177 (4%)	176 (3%)	148 (3%)
HIST	108 (2%)	121 (2%)	121 (2%)
LITT/LANG	224 (4%)	253 (5%)	266 (5%)
PHIL	15 (0%)	21 (0%)	15 (0%)
NAMS	996 (20%)	1093 (21%)	1165 (23%)
BIOL	252 (5%)	305 (6%)	350 (7%)
CHEM	42 (1%)	49 (1%)	72 (1%)
ENVL	284 (6%)	285 (6%)	279 (5%)
GEOL	29 (1%)	35 (1%)	23 (0%)
MARS	232 (5%)	231 (5%)	261 (5%)
MATH	98 (2%)	132 (3%)	130 (3%)
PHYS	59 (1%)	56 (1%)	50 (1%)
PROS	2010 (40%)	1897 (37%)	1803 (35%)
BSNS	1204 (24%)	1032 (20%)	899 (17%)
INFO	213 (4%)	210 (4%)	201 (4%)
NURS	102 (2%)	102 (2%)	108 (2%)
PHTH	303 (6%)	347 (7%)	369 (7%)
PUBH	108 (2%)	114 (2%)	125 (2%)
SPAD	80 (2%)	92 (2%)	101 (2%)
SOBL	939 (19%)	980 (19%)	1059 (21%)
CRIM	293 (6%)	317 (6%)	365 (7%)
ECON	40 (1%)	29 (1%)	24 (1%)
POLS	161 (3%)	152 (3%)	150 (3%)
PSYC	271 (5%)	264 (5%)	278 (5%)
SOCY/ANTH	53 (1%)	73 (1%)	68 (1%)
SOWK	121 (2%)	145 (3%)	174 (3%)
GENS	55 (1%)	50 (1%)	56 (1%)
LIBA	55 (1%)	50 (1%)	56 (1%)
UNDC	530 (10%)	539 (11%)	514 (10%)

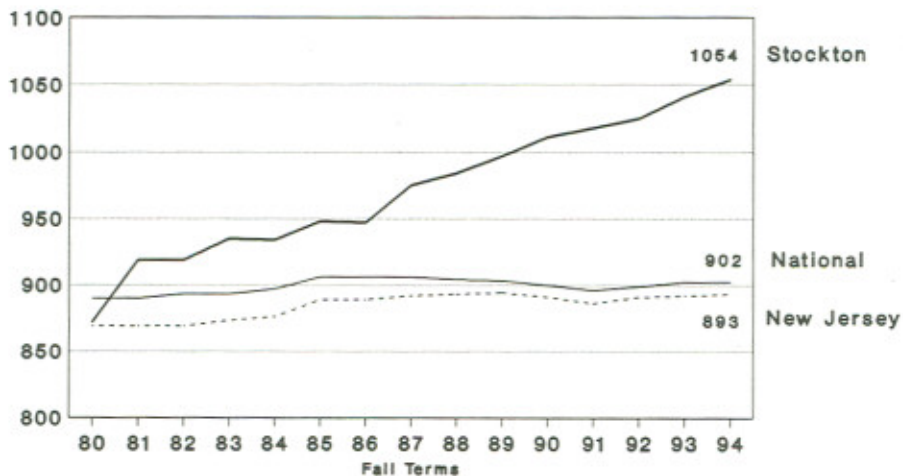
**Stockton College of New Jersey
Fall 1980 - Fall 1994
Total Applicants**



Stockton received 5,682 applications for admission in Fall 1994. This represents an increase of 55% over the Fall 1980 applicant pool of 3,672.

9/16/94

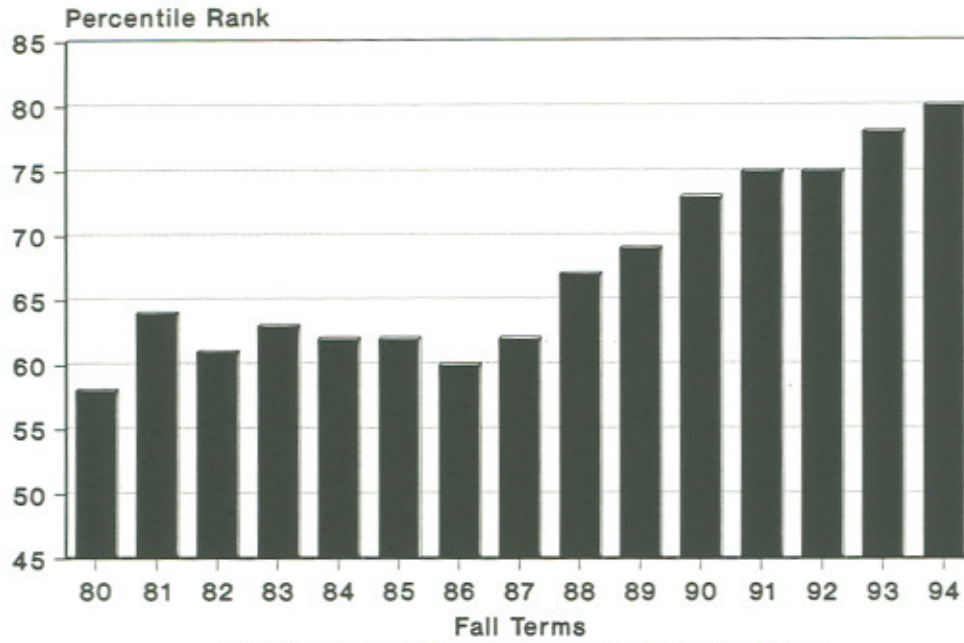
**Average Total SAT Scores 1980 - 1994
Stockton Regular Admission versus
National and New Jersey College-Bound**



Stockton College reports a 1054 average total SAT score for its regularly admitted freshmen for the Fall 1994 semester. This figure represents a 182 point increase when compared to the Fall 1980 SAT score of 872. As a frame of reference, Stockton's improved SAT profile is significant when compared to the trends that have occurred for college-bound seniors both nationally and statewide.

9/16/94

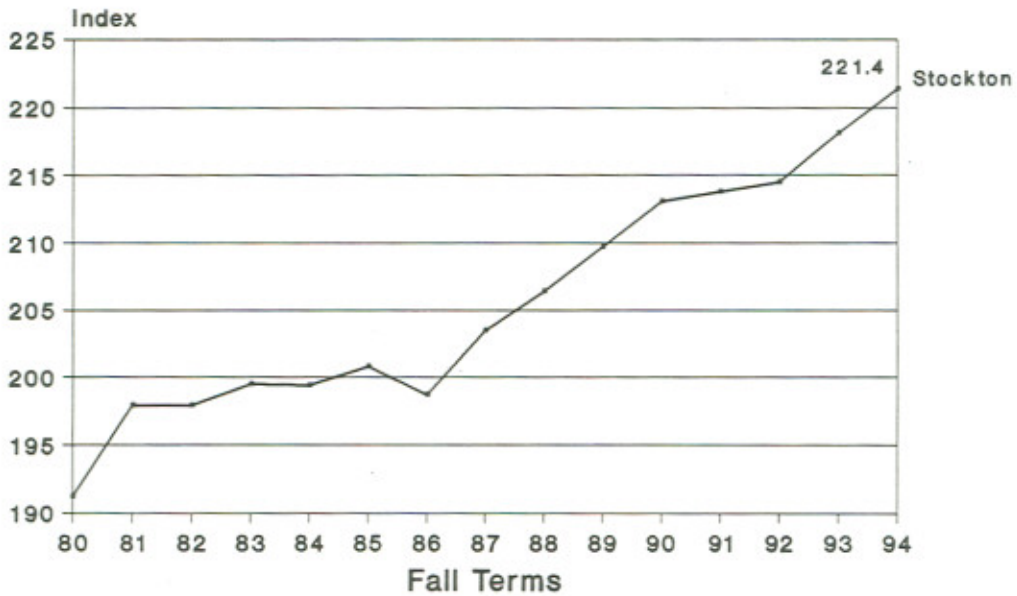
**Stockton College of New Jersey
Average High School Rank 1980-1994**



The average high school rank of entering freshmen increased from the 58th percentile in Fall 1980 to 80th in Fall 1994.

9/16/94

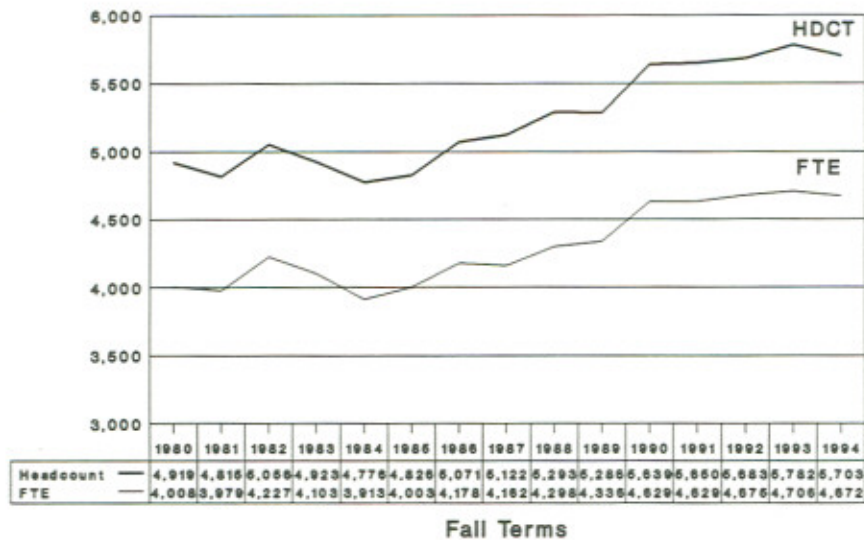
**Stockton College of New Jersey
Academic Index 1980 - 1994**



The Academic Index at Stockton has increased from 191.2 in Fall 1980 to 221.4 in Fall 1994.

9/16/94

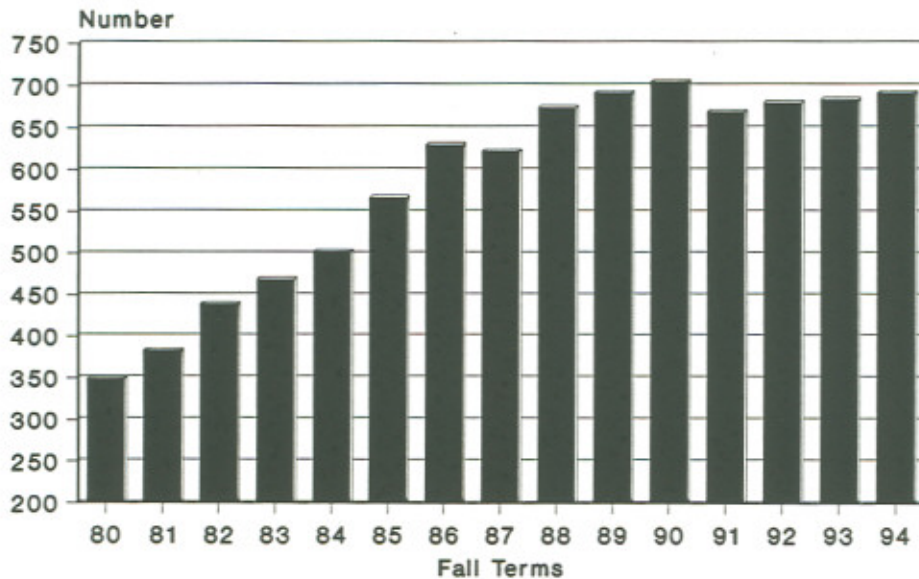
**Stockton College of New Jersey
Total Undergraduate Population (HDCT)
and Full-Time Equivalents (FTE) 1980-94**



Fall Terms
Stockton reports a headcount of 5,703 for Fall 1994, which represents a 16% increase over Fall 1980. The Fall 1994 FTE is 4,672 which is 17% above the Fall 1980 FTE.

9/16/94

**Stockton College of New Jersey
Black and Hispanic Students
Fall 1980 - Fall 1994**



The number of Black and Hispanic students at Stockton has increased 98% from 349 in Fall 1980 to 692 in Fall 1994.

9/16/94