

Commonly Mistaken for Algae: Bryozoans (Moss Animals)



Common Marine Macroalgae of Southern New Jersey: **Heterokontophyta**



Fucus vesiculosus

brown, tough, leathery, flat blades
paired air bladders

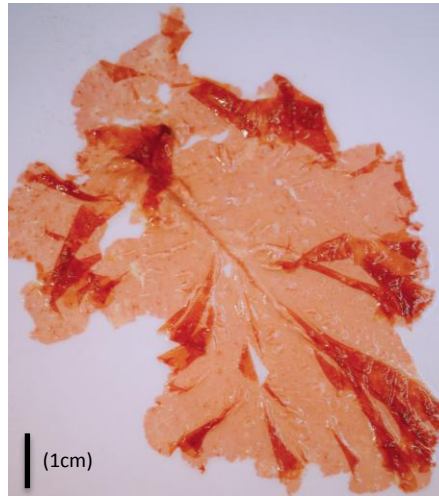
Common Marine Macroalgae of Southern New Jersey: **Rhodophyta**



Gracilaria tickvahe.
 can reach up to 60 cm
 in length
 alternate branching
 red/ brown coloration
 Flattened branches



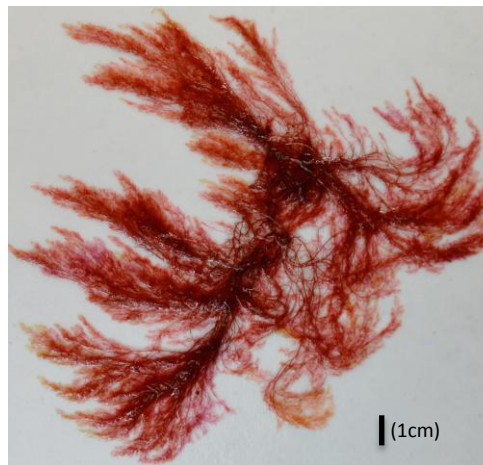
Hypnea
 thin, alternate
 branching
 branches end in
 hooks



Grinnellia americana
 Thin sheets, pink in coloration
 distinctive midrib runs down
 center of blade
 blade is covered in small bumps
 used for reproduction



Gracilaria sp.
 can reach up to 60 cm in length
 alternate branching
 red/ brown coloration



Polysiphonia
 Filamentous blades,
 red-brown coloration



Agardhiella
 can reach up to 30 cm in length
 irregularly and radially branched
 distinctive translucent/red color and slimy texture.

Common Marine Macroalgae of Southern New Jersey: Chlorophyta



Ulva intestinalis

thin, flat blades with rounded tips
bright green coloration



Acrosiphonia

filamentous blades
green in coloration
branches become tangled and give the algae a mat-like appearance.



Codium fragile

blades are tubular and thick
distinctive spongy texture
green coloration



Ulva lactuca

thin sheets
bright green coloration.