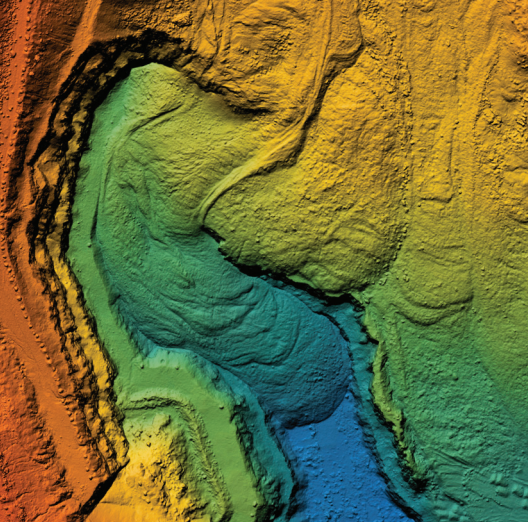
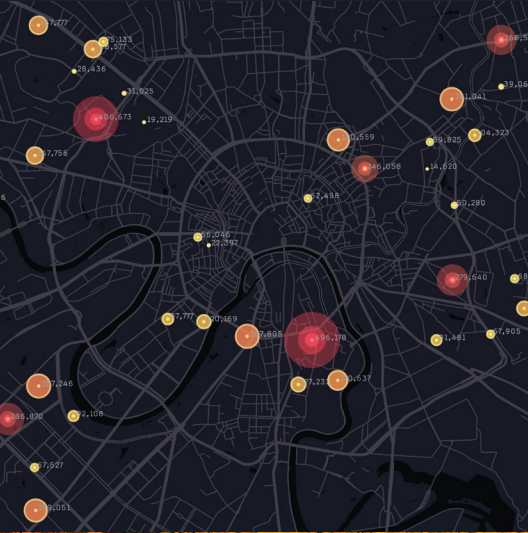


# Join one of the **FASTEST GROWING** and **IN-DEMAND** fields!



[stockton.edu/sciences-math/gis](http://stockton.edu/sciences-math/gis)

**STOCKTON** | SCHOOL OF NATURAL  
UNIVERSITY | SCIENCES & MATHEMATICS

Stockton is an Equal Opportunity Institution

# Geographic Information Systems (GIS) Certificate

Various industries and organizations use Geographic Information Systems (GIS) to analyze trends, visualize historic changes, and aide in future decision-making strategies. The geoservices industry is expecting a 35% growth each year over the next decade.

Individuals with GIS certification possess a skill set that is transferable to a variety of industry sectors and can open a broad base of job options and careers.

## Common uses of GIS include:

- Inventory and management of resources
- Crime mapping
- Establishing and monitoring routes
- Managing networks
- Monitoring and managing vehicles
- Managing properties
- Locating and targeting customers
- Managing agricultural crop data
- Addressing public health concerns
- Mapping wildfire risk and preparedness
- Modeling hazmat risk
- Mapping, monitoring and mitigating invasive species

## Set yourself apart from the crowd!

GIS Certification shows employers you are dedicated to your profession and verifies you are well-trained to use the tools in your industry.

Learn how you can complete a certificate program within one year!\*

\*students who meet prerequisites

